

# FAMILY SCIENCE NIGHT

## THE WONDERS OF OUR WATERS

### 1. Sea Creature Surgery

Help sea turtles and manatees by removing harmful items while learning about their body parts and how they differ from each other.



### 2. Ocean Cleanup Quest

Become an ocean hero by removing trash from the water, and learn why clean water is important for all living things.



### 3. Food Chain Toss

Toss bean bags to build a food chain from the sun to the tiger shark and see how energy flows through each level.



### 4. Handy Adaptations

Explore how octopuses and crabs use their unique hand-like features to survive in their environments.



### 5. Fish Sensory Hunt

Use your fingers like fish barbels to find hidden treasures in a rice bin and learn how fish use their senses.



### 6. Migration Maze

Guide a robot through a maze to learn how animals like salmon migrate between different types of water habitats.



### 7. Ocean Depth Discovery

Place magnetic sea creatures in their correct ocean zones and learn about how they live in those unique habitats.



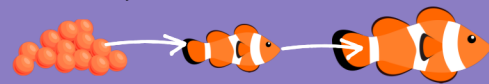
### 8. Beach Safety Challenge

Join the beach patrol to escape rip currents, decode flag signals, and conquer the life jacket challenge.



### 9. Underwater Growth

Explore the life cycles of underwater plants and animals, learning how they develop and thrive in their habitat.



### 10. Lionfish Stomach Safari

"Dissect" a lionfish plushy and sort the "eaten" animals as vertebrates or invertebrates while learning about this hungry invader's impact on marine life.



### 11. Shell Creators

Create your own colorful bivalve shell and discover how these sea creatures make their shells and survive in their homes.



### 12. Water Cycle Bracelet

Make your own water cycle bracelet to explore how water moves from one state to another.



### 13. Coral Reef Construction

Create a vibrant coral reef and explore how the plants and animals depend on each other to thrive in their underwater home.



### 14. Spiny Sea Urchins

Make a sea urchin model and learn how these animals use their spines for protection and movement.



### 15. Chomping Parrotfish

Create a parrotfish clothespin that "eats" algae with every clip, and explore how these vibrant fish use their beak-like teeth to graze on algae and support coral reef ecosystems.



# FAMILY SCIENCE NIGHT

## FLORIDA STATE STANDARDS

### 1. Sea Creature Surgery

- SC.K.L.14.3: Observe plants and animals, describe how they are alike and how they are different in the way they look and in the things they do.
- SC.4.L.17.4: Recognize ways plants and animals, including humans, can impact the environment.

### 2. Ocean Cleanup Quest

- SC.1.E.6.2: Describe the need for water and how to be safe around water.
- SC.4.L.17.4: Recognize ways plants and animals, including humans, can impact the environment.

### 3. Food Chain Toss

- SC.4.L.17.3: Trace the flow of energy from the Sun as it is transferred along the food chain through the producers to the consumers.
- SC.3.L.17.2: Recognize that plants use energy from the Sun, air, and water to make their own food.

### 4. Handy Adaptations

- SC.5.L.14.2: Compare and contrast the function of organs and other physical structures of plants and animals, including humans.
- SC.5.L.17.1: Compare and contrast adaptations displayed by animals and plants that enable them to survive in different environments such as life cycle variations, animal behaviors and physical characteristics.

### 5. Fish Sensory Hunt

- SC.2.P.8.1: Observe and measure objects in terms of their properties, including size, shape, color, temperature, weight, texture, sinking or floating in water, and attraction and repulsion of magnets.

### 6. Migration Maze

- SC.2.L.16.1: Observe and describe major stages in the life cycles of plants and animals, including beans and butterflies.
- SC.5.L.15.1: Describe how, when the environment changes, differences between individuals allow some plants and animals to survive and reproduce while others die or move to new locations.

### 7. Ocean Depth Discovery

- SC.2.L.17.2: Recognize and explain that living things are found all over Earth, but each is only able to live in habitats that meet its basic needs.

### 8. Beach Safety Challenge

- SC.1.E.6.2: Describe the need for water and how to be safe around water.

### 9. Underwater Growth

- SC.2.L.16.1: Observe and describe major stages in the life cycles of plants and animals, including beans and butterflies.

### 10. Lionfish Stomach Safari

- SC.3.L.17.1: Describe how animals and plants respond to changing seasons.
- SC.3.L.15.1: Classify animals into major groups (mammals, birds, reptiles, amphibians, fish, arthropods, vertebrates and invertebrates, those having live births and those which lay eggs) according to their physical characteristics and behaviors.

### 11. Shell Creators

- SC.2.P.8.1: Observe and measure objects in terms of their properties, including size, shape, color, temperature, weight, texture, sinking or floating in water, and attraction and repulsion of magnets.

### 12. Water Cycle Bracelet

- SC.5.E.7.1: Create a model to explain the parts of the water cycle.
- SC.5.E.7.2: Recognize that the ocean is an integral part of the water cycle, connected to all of Earth's water reservoirs via evaporation and precipitation.
- SC.3.P.9.1: Describe the changes water undergoes when it changes state through heating and cooling by using scientific terms.

### 13. Coral Reef Construction

- SC.3.L.15.1: Describe how, when the environment changes, differences between individuals allow some plants and animals to survive and reproduce while others die or move to new locations.
- SC.4.L.17.4: Recognize ways plants and animals, including humans, can impact the environment.

### 14. Spiny Sea Urchins

- SC.3.L.15.1: Describe how, when the environment changes, differences between individuals allow some plants and animals to survive and reproduce while others die or move to new locations.

### 15. Chomping Parrotfish

- SC.3.L.15.1: Describe how, when the environment changes, differences between individuals allow some plants and animals to survive and reproduce while others die or move to new locations.
- SC.4.L.17.4: Recognize ways plants and animals, including humans, can impact the environment.